



## DIMMER

### FEATURES

- Trailing edge 2-wire dimmer, designed for LEDs.
- New Gen 2 dimmer delivers improved driver compatibility, with higher tolerance ripple.
- Compatible with all Emerald Planet LED lights.
- Rated for 350VA load.
- Must be installed by a licensed electrician.

## STANDBY POWER CONTROLLER

### FEATURES

- Standby power saver.
- 6 socket outlets:
  - 1 x master socket
  - 4 x slave sockets
  - 1 x always on power socket.
- 1 hour automatic shutdown.
- Surge/overload protection.



## JUNCTION BOX

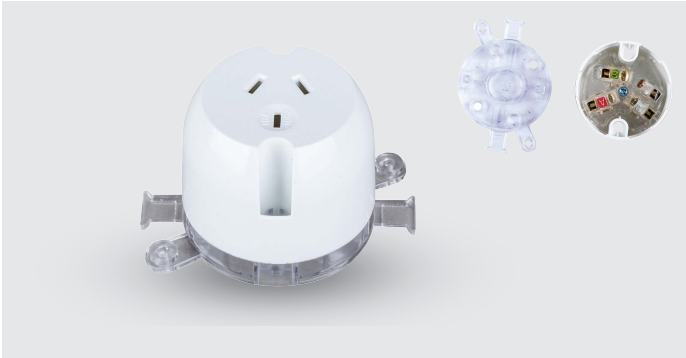
### FEATURES

- Designed to allow ample room for ease of cabling and installation.
- Includes: 1x double screw, 3x single screws - all 40A rated - and x2 nails included to secure Junction Box back plate.
- Connectors fit 3x6mm sq cables.
- Dimensions: L 101mm x W 71mm x H 46mm.

## BATTEN HOLDER

### FEATURES

- B22 (Bayonet Cap - BC) batten holder with.
- Dimensions: D 70mm x H 88.3mm.



### SINGLE PLUG BASE

#### FEATURES

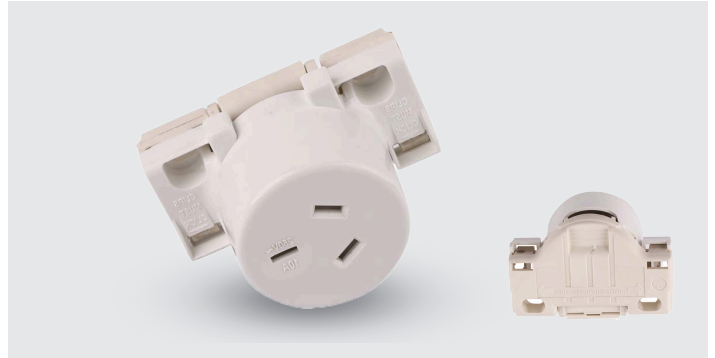
- Includes four large terminals, with Earth and Active terminals colour-coded.
- A transparent mounting bracket is included for ease of installation and additional security.
- Suitable for use with downlights and all appliances with 2 & 3 pin plug leads.
- Mounting Bracket Dimensions: W 89.7 x W 84mm. Plug W 59mm x H 50.6mm.



### CABLE TIES

#### FEATURES

- Keep your wires securely fastened with Emerald Planet's self-locking Cable Ties.
- Dimensions: L 150 x W 4mm.
- Working temperature: -40°C to 85°C
- Material: Nylon66



### QUICK CONNECT

#### FEATURES

- A fast and convenient solution for your next commercial or residential lighting installation.
- Clear markings are located on the terminal to identify cable slots (1.0 to 2.5mm sq cables), supporting ease of installation and minimising errors.
- Dimensions: L 70 x W 48.2 x H 47mm.